

Achieving prosperity in the data economy

An emerging Future of Work strategy for Louisville



Alan Berube, Brookings Metro | @berubea1



AI & the Future of Work Summit | Louisville, Ky. | February 25, 2020

1

What is artificial intelligence, and why is it important?

2

Why should Louisville have a strategy for AI and the data economy?

3

How can the Future of Work initiative drive inclusive growth in Louisville?

1

What is artificial intelligence, and why is it important?

2

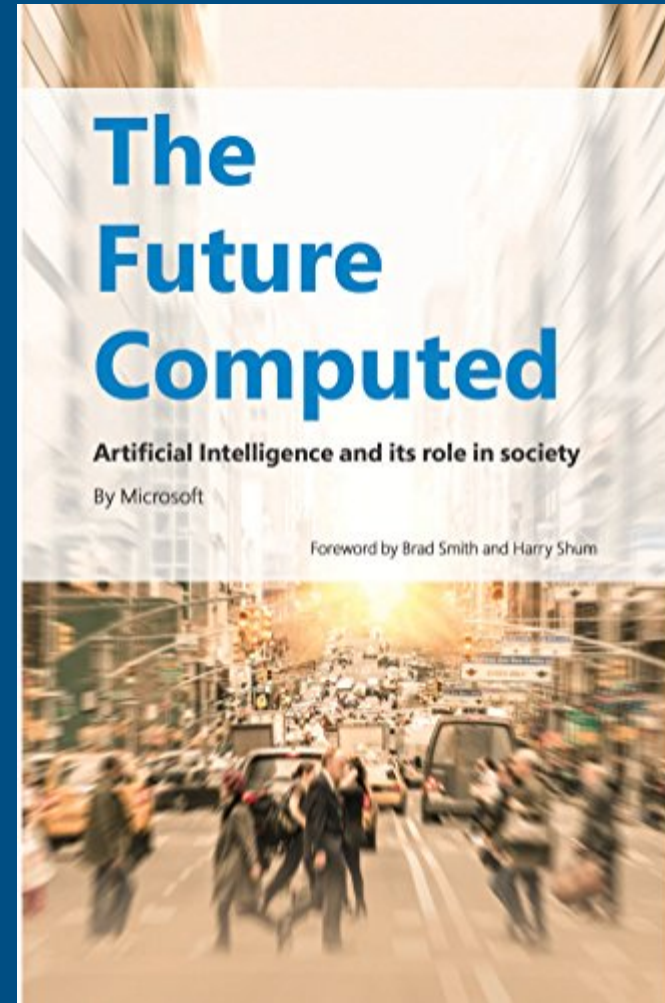
Why should Louisville have a strategy for AI and the data economy?

3

How can the Future of Work initiative drive inclusive growth in Louisville?



A set of technologies that enable computers to perceive, learn, reason, and assist in decision-making to solve problems in ways that are similar to what people do.





The Data Economy

Same or different person?



✓ Same ✗ Different ? Not sure

Previous

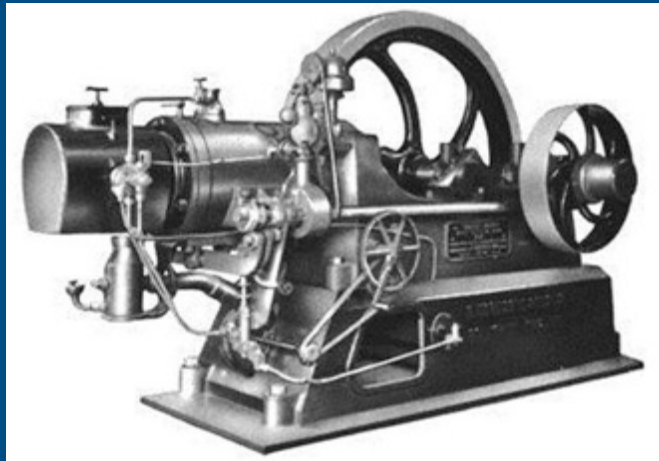
Done



Text Message
Sun, Nov 5, 5:03 AM

Amex Fraud Free Msg: Did you just try to charge 130.63 USD at DIG IT LIVER? 1 if yes, 2 to call Amex. Text STOP to opt out. [18008249289](tel:18008249289)





Car Sales		Cars on Credit	
NUMBER OF GENERAL MOTORS CARS SOLD	1934	NUMBER OF CARS OF TRUCKS BOUGHT BY CREDIT	1934
1930	39,390	ON CREDIT THROUGH GENERAL MOTORS ACCEPTANCE CORPORATION	1930
1931	587,341	SALES	1930
1932		TOTAL	1,147,808
1933		AMOUNT OF CREDIT GRANTED	\$810,000,000
1934		PAID IN FULL	
GENERAL MOTORS		GENERAL MOTORS	



1

What is artificial intelligence, and why is it important?

2

Why should Louisville have a strategy for AI and the data economy?

3

How can the Future of Work initiative drive inclusive growth in Louisville?

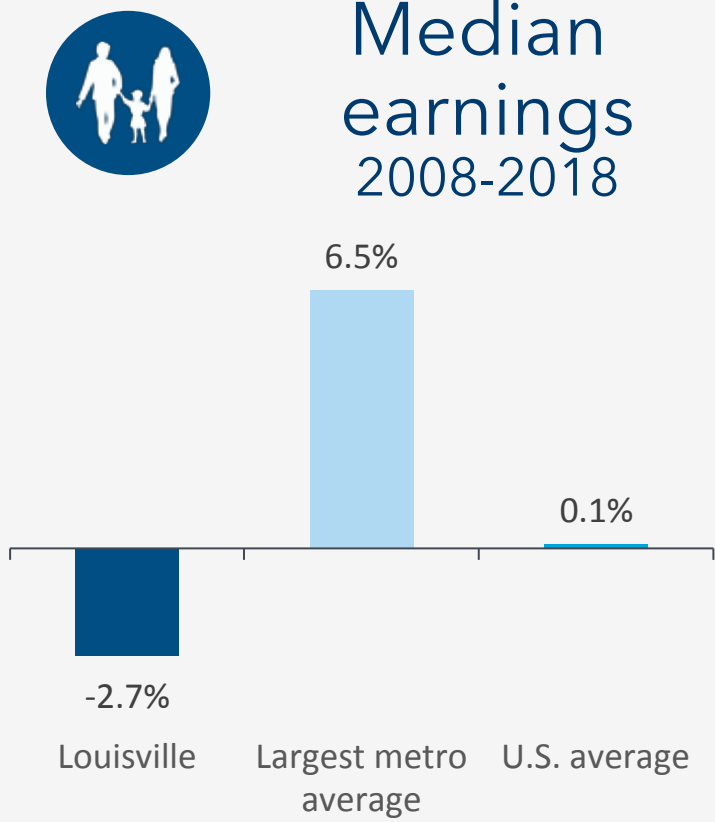
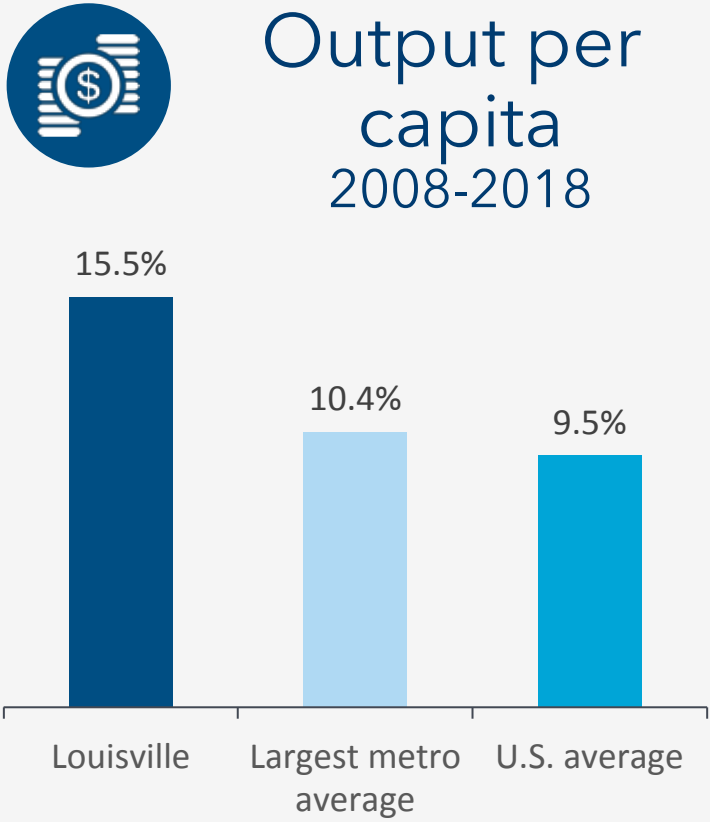
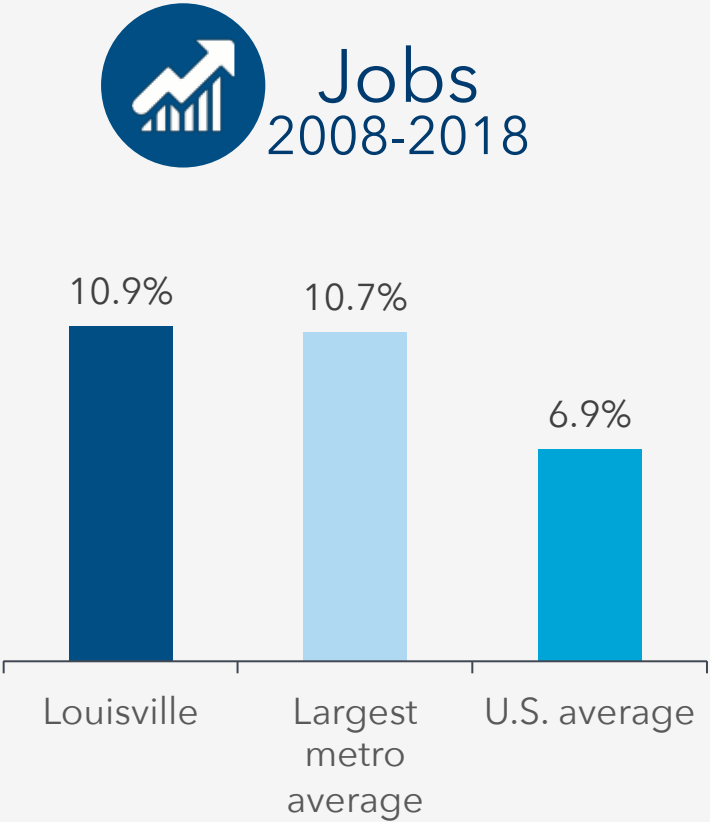




Michelle Cundiff Michelle Cundiff Michelle Cundiff

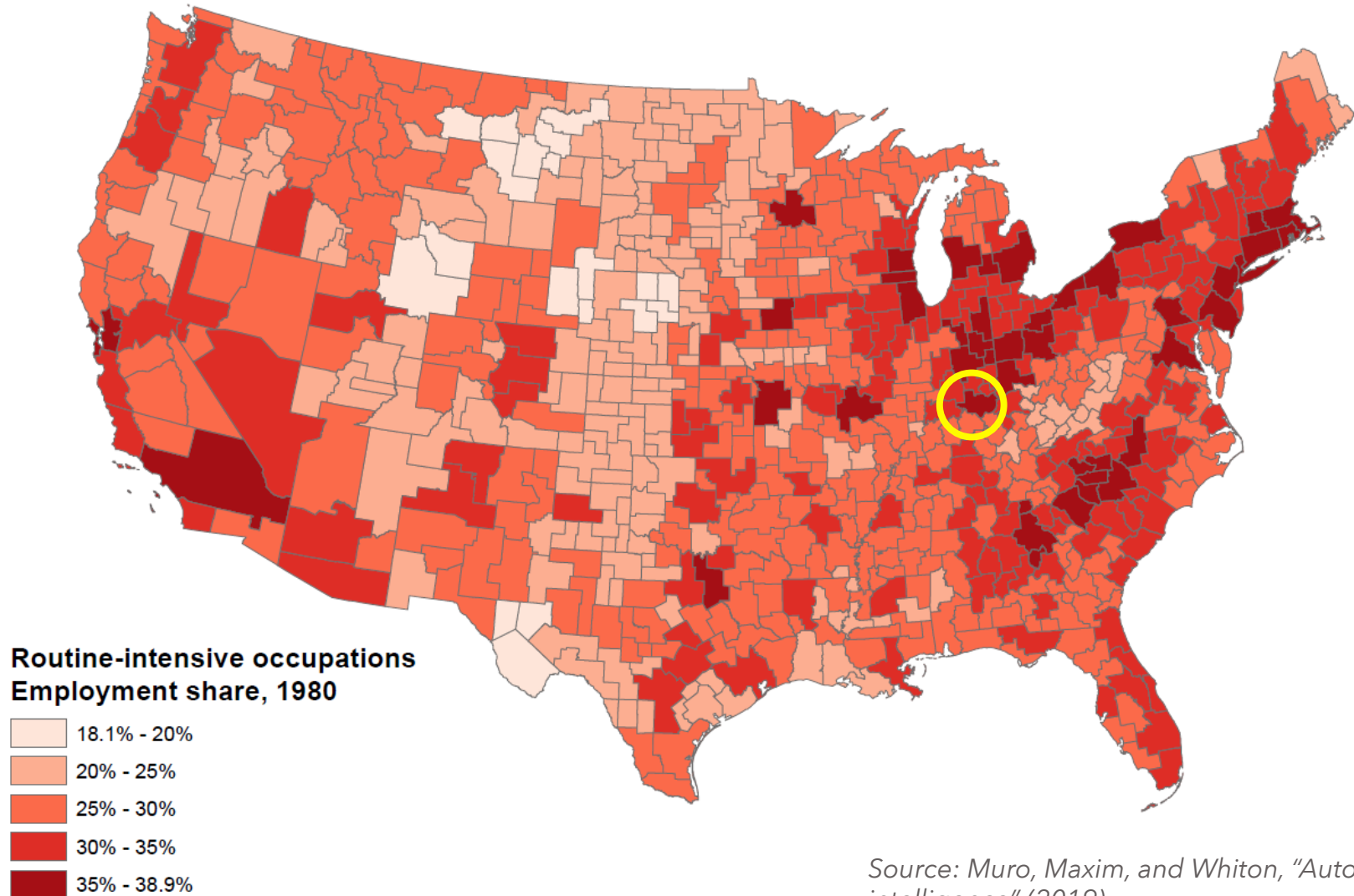


Louisville's economy has grown, but not everyone is better off



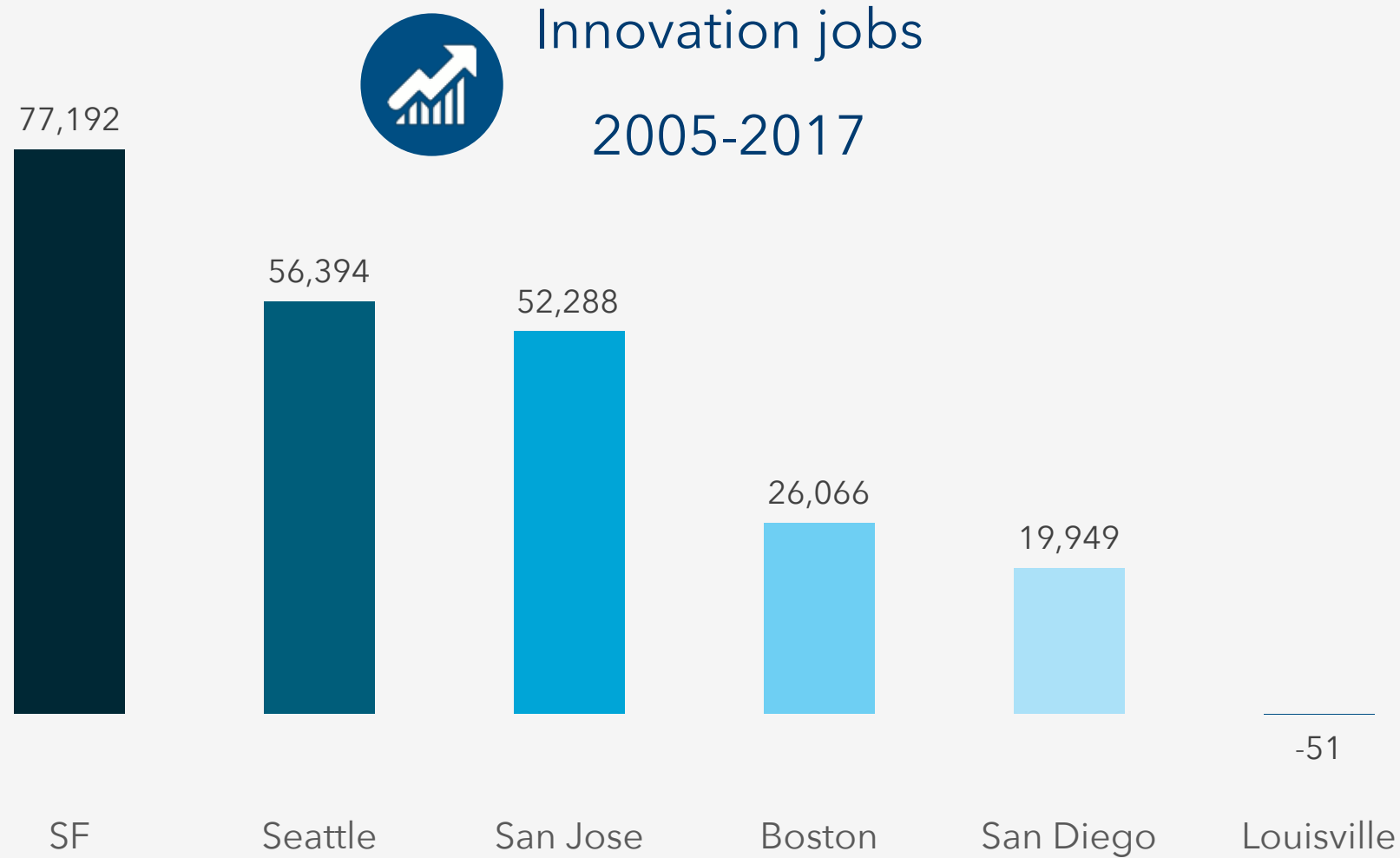
Source: Brookings, "Metro Monitor 2020" (forthcoming)

Automation has significantly impacted jobs in Louisville

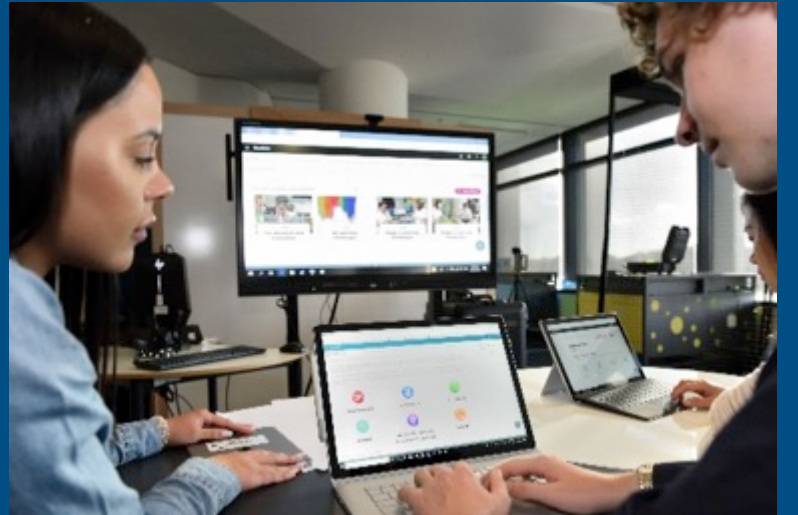
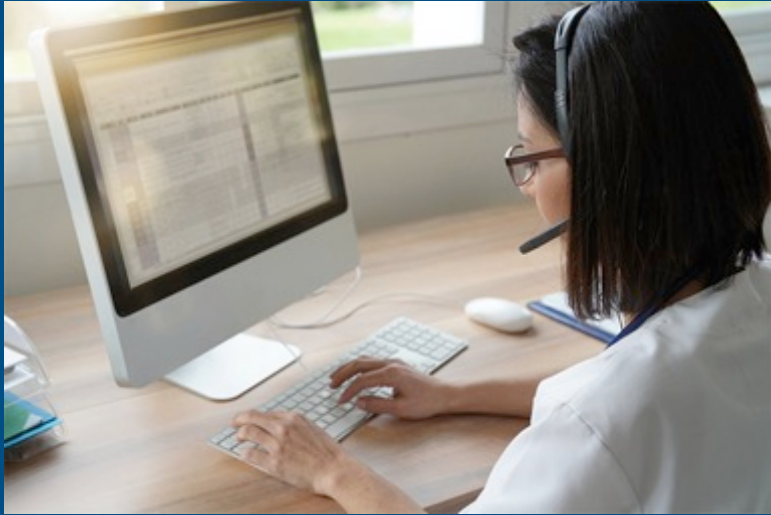


Source: Muro, Maxim, and Whiton, "Automation and artificial intelligence" (2019)

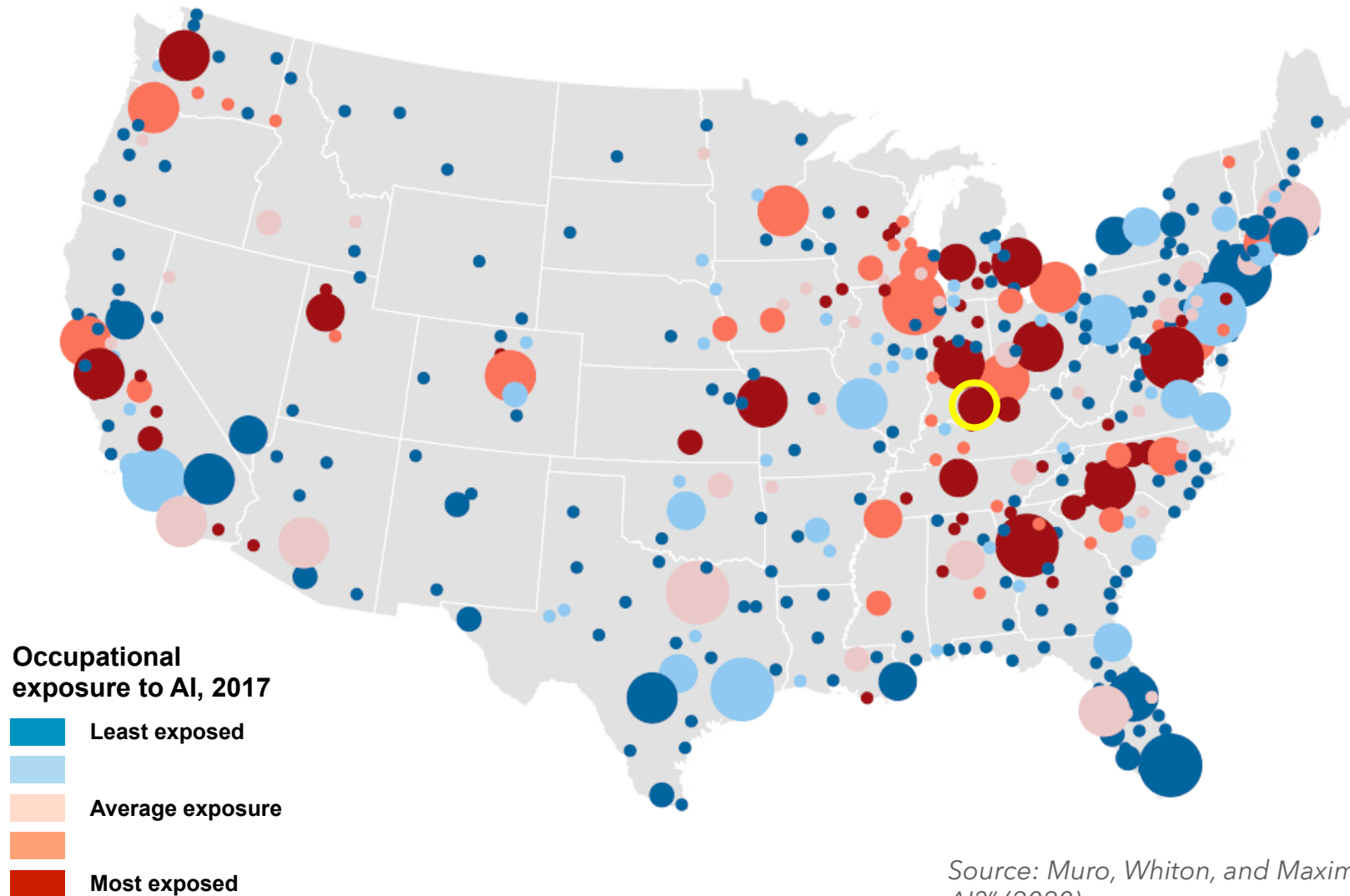
High-tech jobs, meanwhile, have largely concentrated elsewhere



Source: Atkinson, Muro, and Whiton, "The case for growth centers" (2019)



Artificial intelligence could have big impacts on Louisville's future



Source: Muro, Whiton, and Maxim, "What jobs are affected by AI?" (2020)

1

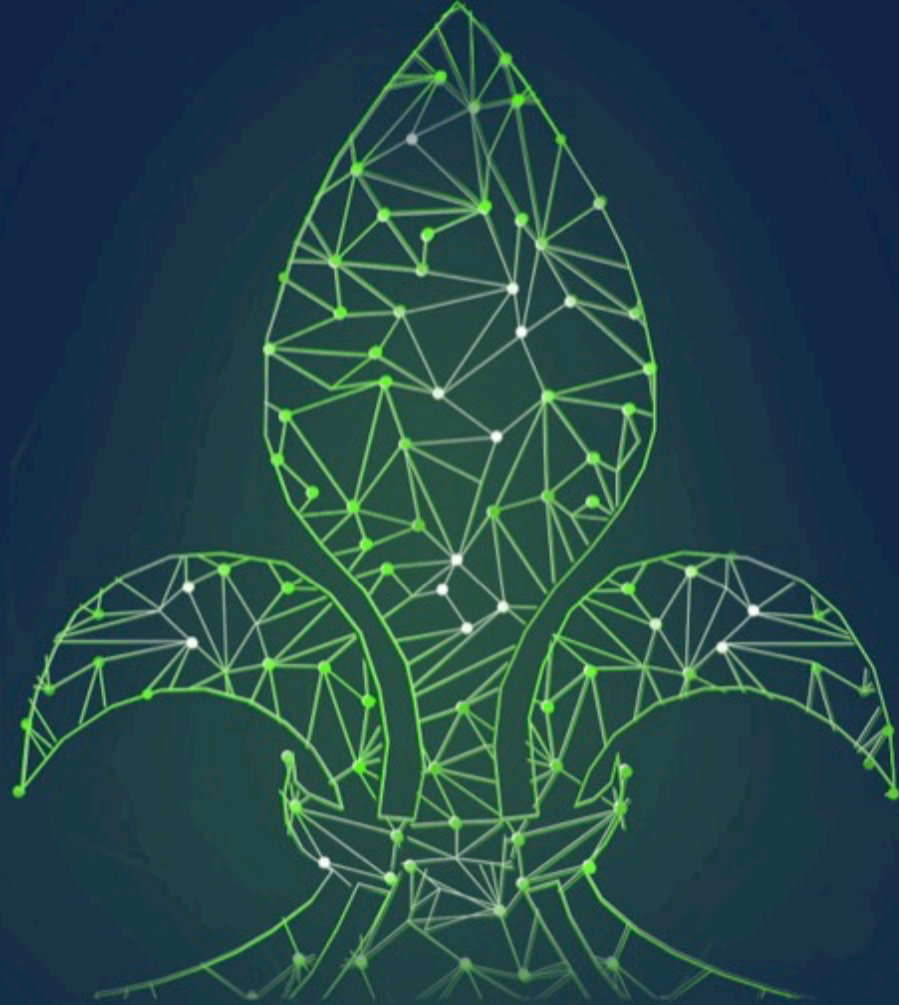
What is artificial intelligence, and why is it important?

2

Why should Louisville have a strategy for AI and the data economy?

3

How can the Future of Work initiative drive inclusive growth in Louisville?



LOUISVILLE

FUTURE OF WORK INITIATIVE

POWERED BY MICROSOFT AND LOUISVILLE METRO GOVERNMENT

High-level goals/strategic areas for the Future of Work Initiative

Regional hub

Louisville is the best mid-sized city in America for opportunities in AI and data innovation

Workforce transformation

Louisville's workforce is the best most data-credentialed per capita in the nation

Industry development

Louisville leads the nation in AI/data economy-related middle-class job growth rate

Diversity and inclusion

Participants in Louisville's AI/data economy represent the whole community

AI for good

Louisville models fairness, reliability, transparency, and accountability in its AI/data economy



Regional hub strategies





Workforce transformation strategies





Industry development strategies





Achieving prosperity in the data economy

An emerging Future of Work strategy for Louisville



Alan Berube, Brookings Metro | @berubea1



AI & the Future of Work Summit | Louisville, Ky. | February 25, 2020